

# Odour surveys



We facilitate odour surveys as part of our broader odour management services, assisting clients to manage odour complaints and meet ongoing compliance requirements and local regulations.

Standardised odour surveys are an important tool for assessing the nature and extent of odour related to complaints. They also provide valuable information about the risks of odour from existing operations and activities.

Our engineers and scientists have decades of specialist experience in air quality and odour management. They have an intimate understanding of the state and local environmental approval requirements, and strong relationships with local regulatory agencies, which supports the delivery of comprehensive odour survey analysis and recommendations.

Our odour surveys complement other tools, including ambient odour measurement with portable diluters, source sampling, laboratory analysis, emission modelling and dispersion modelling.

## Our capabilities

- Odour field surveys
- Expert testimony
- Odour training

## Industries we support

- Landfill and waste management operators
- Food processing
- Animal production and processing
- Composting manufacturing
- Agriculture processing
- Glass manufacturing
- Fibre-glassing

## We also collaborate with:

- Solicitors
- Planners
- Engineers
- Government and regulatory agencies





## How we help

Our comprehensive odour survey process includes identifying sources and characteristics, defining appropriate buffers (sources, boundaries and/or receptors), identifying the extent of plumes, reviewing complaints and considering fixed gas measurement points.

Where needed, we then incorporate odour surveys (using the dynamic plume method of BS EN16841-2:2016 *Ambient air – Determination of odour in ambient air by using field inspection; Part 2: Plume method*) and measurements.

### Odour field surveys

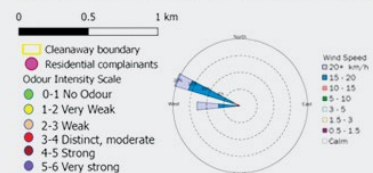
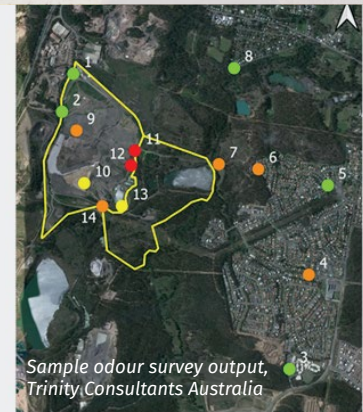
- We can map the extent of site-wide and community-wide ambient odours using field olfactometry and GIS techniques.
- We conduct baseline odour surveys and investigative analyses through ambient odour monitoring using trained assessors.
- Our pre-screened assessors fall into a specific range of odour tolerance to ensure they are not overly sensitive or insensitive to odour.
- We also establish background odour at the beginning of surveys to ensure we fully understand the contribution of odour from upwind sources.

### Peer reviews and expert testimony

- We offer odour peer review services for consultants and industry. Our qualifications and past experience enable us to provide reliable expert testimony and opinion.

### Odour training

- We provide professional training in conducting odour surveys and two courses: 1) Fundamentals of Odour: Measurements, Modelling, and Minimisation; 2) Managing Environmental Nuisances: Odour and Noise.
- Courses are presented by our senior-level odour experts, who have contributed to numerous odour compliance and mitigation projects.
- Custom training courses on odour topics are also available.



Location	Odour type	Intensity	Hedonic tone
1	-	0	0
2	-	0	0
3	-	0	0
4	Sewage/H <sub>2</sub> S/rubbish	2.5	-1
5	-	0	0
6	Sewage/rubbish	2	-0.5
7	Sewage/rubbish/H <sub>2</sub> S	2	-0.5
8	-	0	0
9	Sewage/deodoriser/chemical	2.5	-1
10	Sewage/H <sub>2</sub> S/rubbish	1.5	-1
11	Sewage/H <sub>2</sub> S	3	-1.5
12	Sewage/H <sub>2</sub> S	3	-1.5
13	H <sub>2</sub> S/dirt/chemical	1.5	-0.5
14	H <sub>2</sub> S/rubbish	2	-1

## Certifications and standards

- JAS/ANZ 3rd Party Certified by SCI Qual International (certification number 4277) for our Quality Management System, which is in conformance with ISO 9001:2015
- NATA-accredited in accordance with ISO/IEC 17025 for AS/NZS 4323.3 & NSW EPA OM-7
- Staff who are Certified Air Quality Professionals (CAQP)

## Our clients and projects

Head to [trinityconsultantsaustralia.com.au/projects](http://trinityconsultantsaustralia.com.au/projects) to see some of our latest odour management and survey projects, including:

- Howard Sewerage Treatment Facility – odour assessment
- Waste transfer stations at Willawong, Yandina, Torrington, Glendenning, Gympie, Jeebropilly, Chinderah, Wangaratta, Oxenford and Toowoomba – air and acoustic services