



AUSTRALIA



Trinity Consultants Australia offers a comprehensive range of environmental services, including marine and coastal ecology.

Our team of full-time research staff, certified coxswains and marine professionals undertake marine and coastal surveys, habitat mapping, monitoring, and a range of other marine and coastal services.

We have dedicated laboratory facilities, specialised field equipment and a fleet of commercial vessels to provide readily mobilised field technical services. We also have highly qualified in-house taxonomists with international quality control training to ensure our marine and coastal ecology and monitoring is of the highest standards.

Our capabilities

Marine and coastal habitat mapping

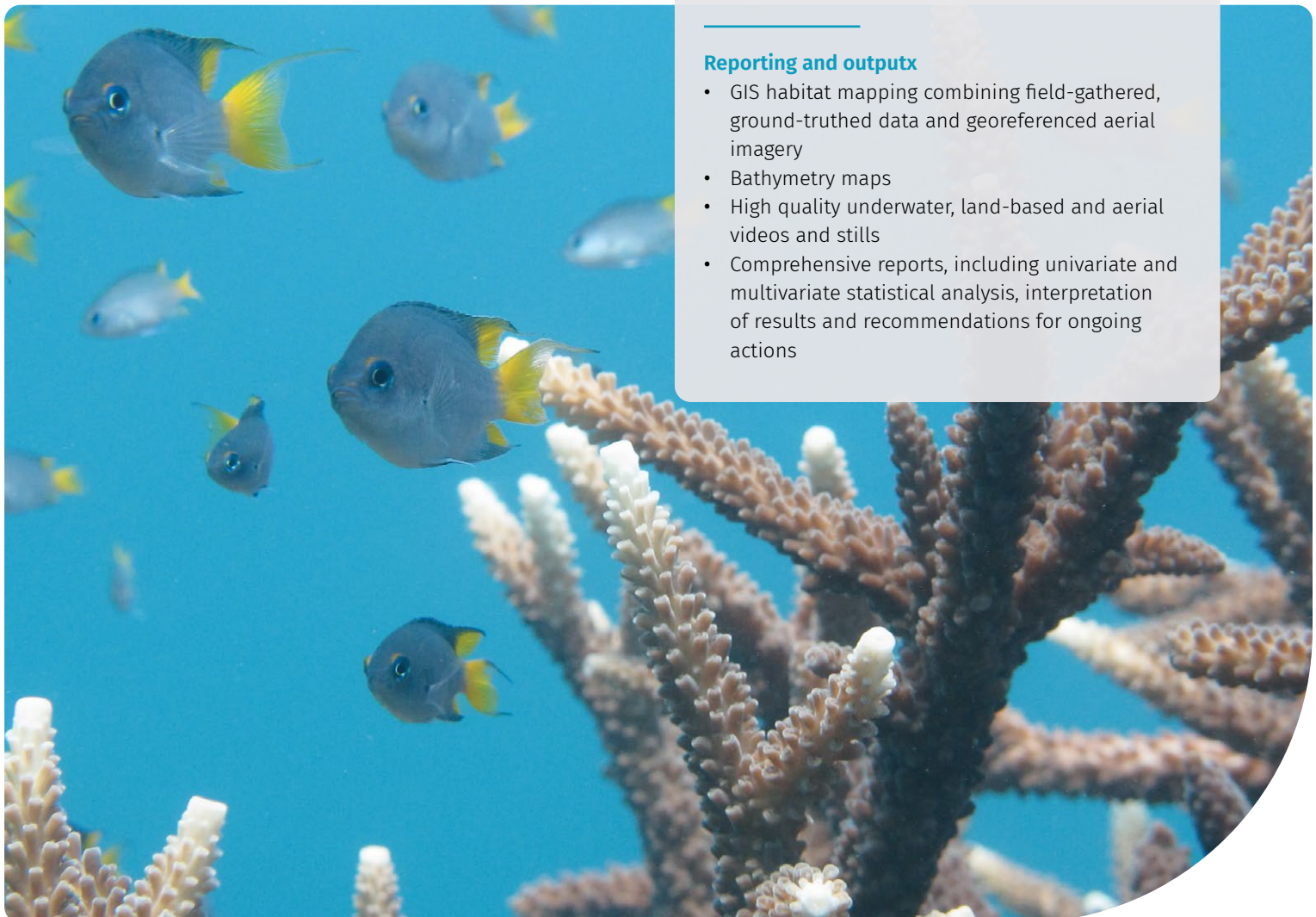
- Coral reefs
- Mangrove communities
- Seagrass meadows
- Subtidal and intertidal soft sediment macroinvertebrate communities
- Rock reef communities
- Pelagic systems
- Bathymetry

Marine and coastal monitoring

- Invertebrates including in- and epi-fauna for soft sediment, rocky reef and epiphytic habitats
- Fish communities including visual surveys, line fishing, netting, clove oil capture, light trapping and observational/behavioural surveys
- Zoo and phytoplankton community ecology
- Seagrass and macroalgae
- Marine pest incursions

Reporting and outputx

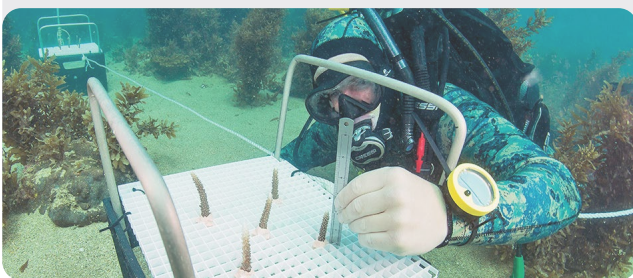
- GIS habitat mapping combining field-gathered, ground-truthed data and georeferenced aerial imagery
- Bathymetry maps
- High quality underwater, land-based and aerial videos and stills
- Comprehensive reports, including univariate and multivariate statistical analysis, interpretation of results and recommendations for ongoing actions





Equipment and technology

- Commercial in-survey vessels, operated by our in-house coxswains
- Scientific dive equipment, including underwater sampling and assessment tools
- Underwater still and video cameras
- Underwater and aerial drones (ROV, or remotely operated vehicle) operated by a commercial remote UAV (unmanned aerial vehicle) pilot
- Benthic multiplatform sled tow (HD video, still images, multiparameter water measurements, depth, heading, position etc)
- Fishing nets, including monofilament gill nets, seine nets, fyke nets, cast nets and phyto/ zooplankton nets
- Baited remote underwater video stations (BRUVs)
- Sedimentation/erosion rate logging,
- Stainless steel benthic grab samplers of various sizes for sediment and infauna collection
- Side scan sonar for bathymetry surveys
- Laboratory facilities for taxonomy and image analysis, including fume hoods, stereo, and compound microscopes, and image analysis software.



Accreditations, standards and permits

- All dive operations conducted to AS/NZS 2299.2 and the VE90 Diving Operations Manual.
- Australian Diver Accreditation Scheme-certified dive supervisor, and all divers with minimum qualification of Rescue Diver, holding current occupational dive medicals and advanced first aid certifications.
- Appropriate Great Barrier Reef Marine Park Authority and Fisheries permits, as well as Animal Ethics Scientific Use Registration.

Our clients

- Gladstone Ports Corporation (benthic monitoring, surveys, flora and fauna assessments, biosecurity monitoring, marine footprint)
- North Queensland Bulk Ports (coral impact monitoring)
- Queensland Alumina (macroinvertebrate monitoring)
- Agnes Water Desalination Plant (receiving environment assessment, underwater structure surveys)
- Styx River (baseline marine monitoring)
- PNG LNG Facility (mangrove monitoring and water tracer studies)